



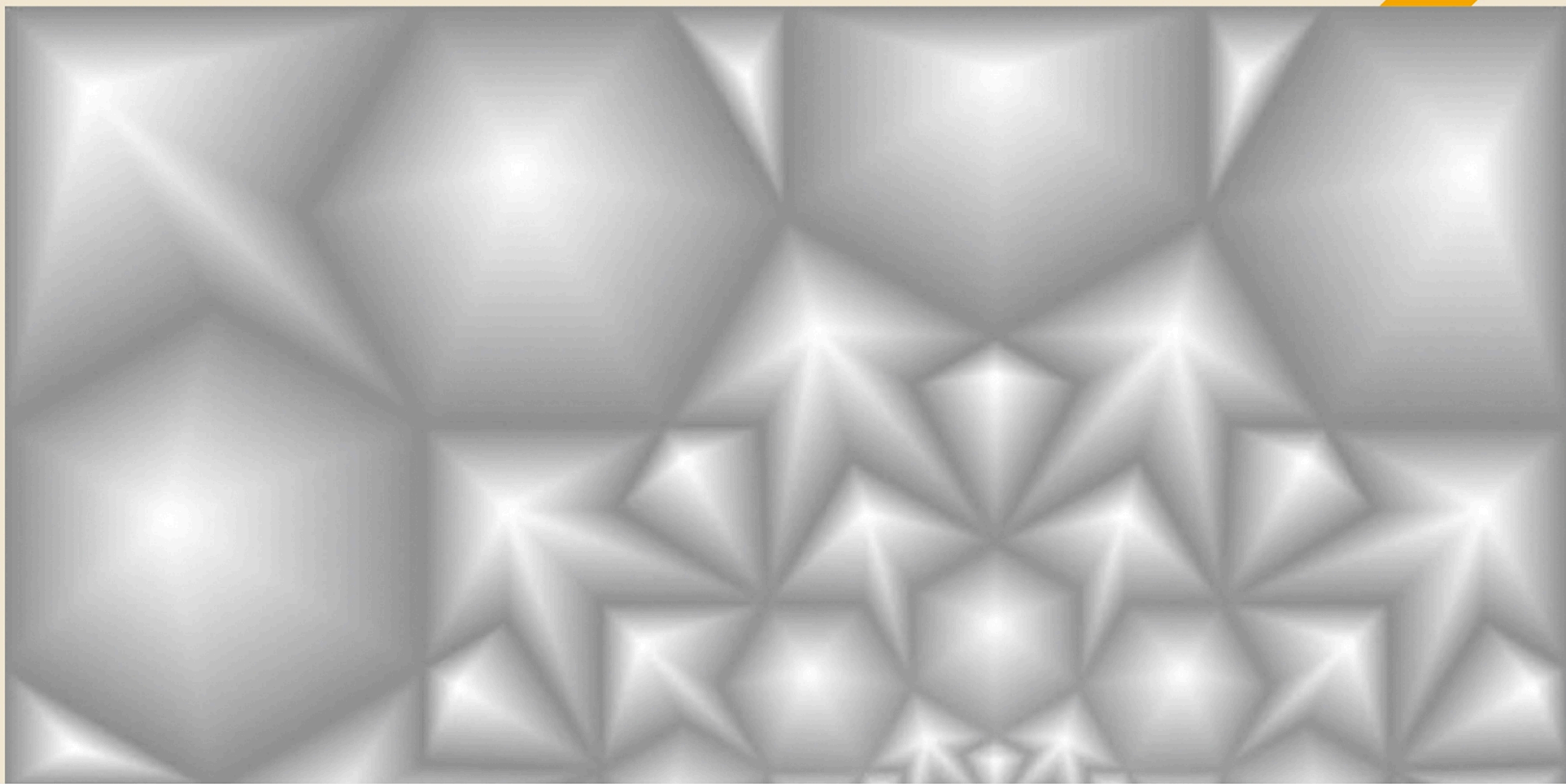
ESKIMO
CERAMICA

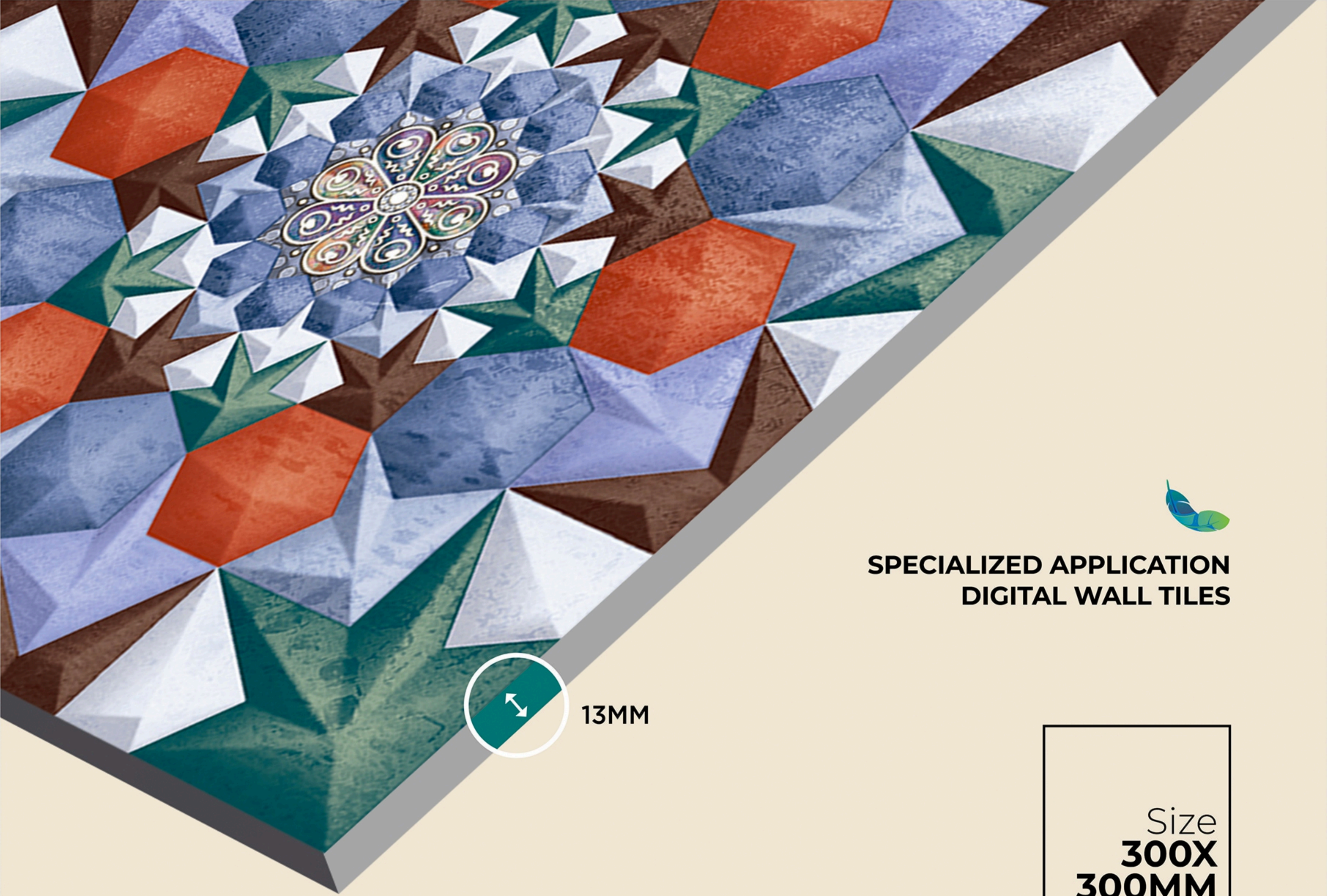
WALL DECOR
TILES

300x300 MM

DECENT

COLLECTION





**SPECIALIZED APPLICATION
DIGITAL WALL TILES**



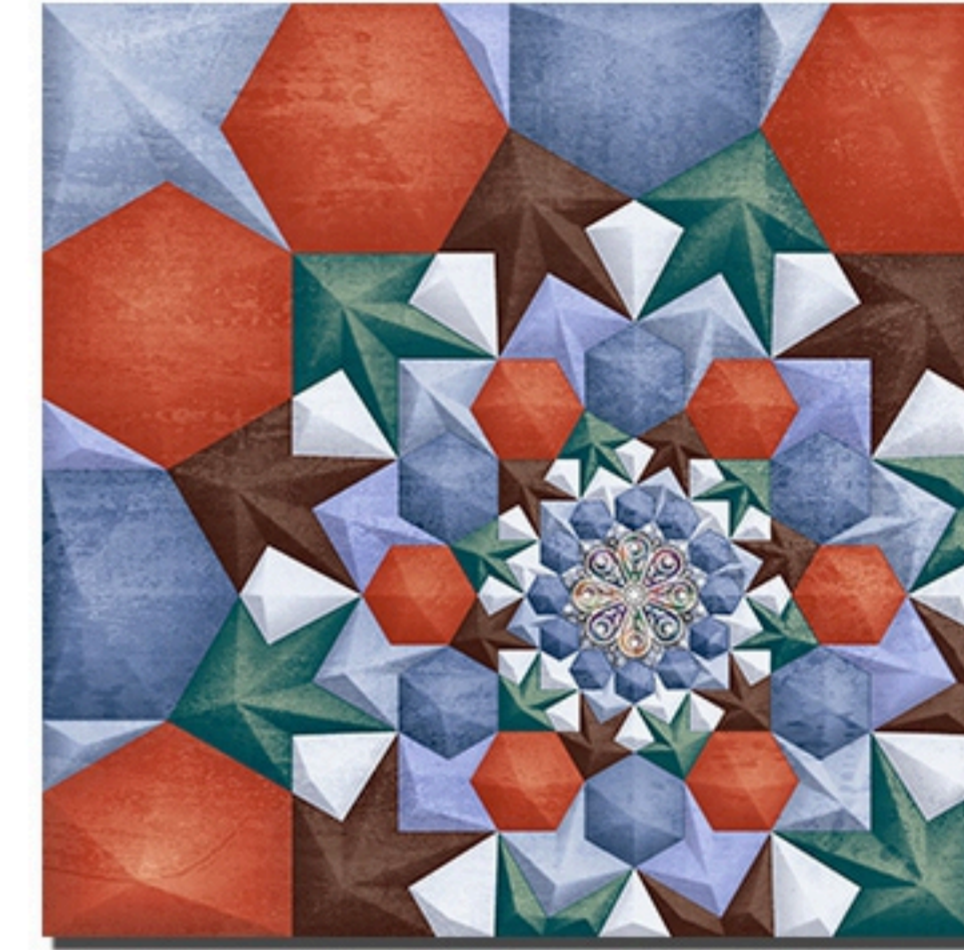
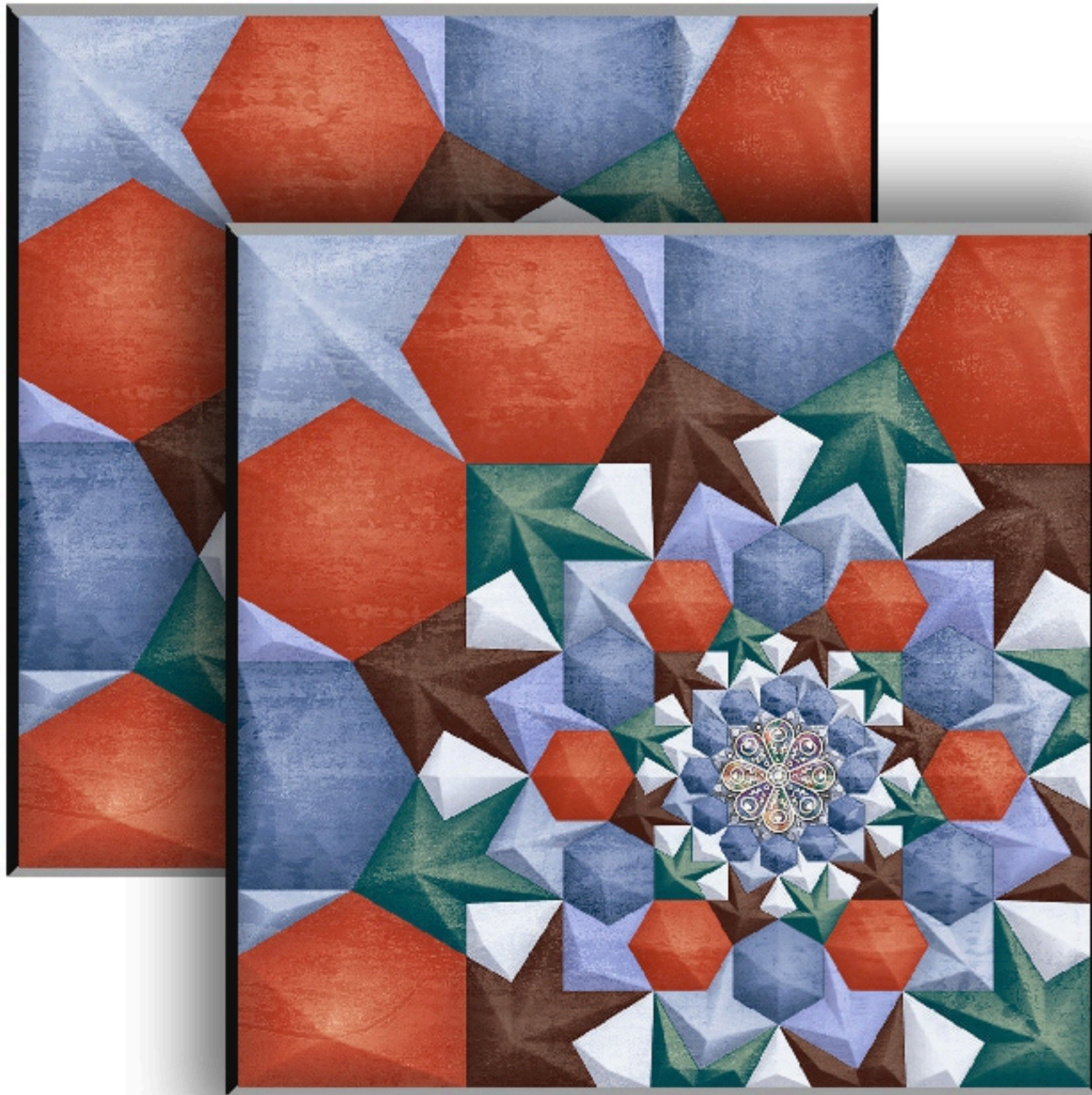
13MM

Size
**300X
300MM**

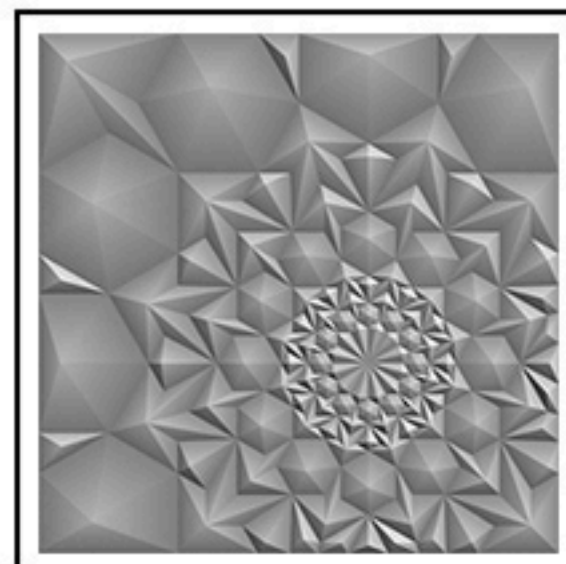
Finish
MATT

Thickness
↑  ↓
13MM

**ICONIC PUNCH
THAT CREATE REVOLUTIONISING
IMPRESSIVELY DESIGNS**



DECENT FERRARI-HL-1



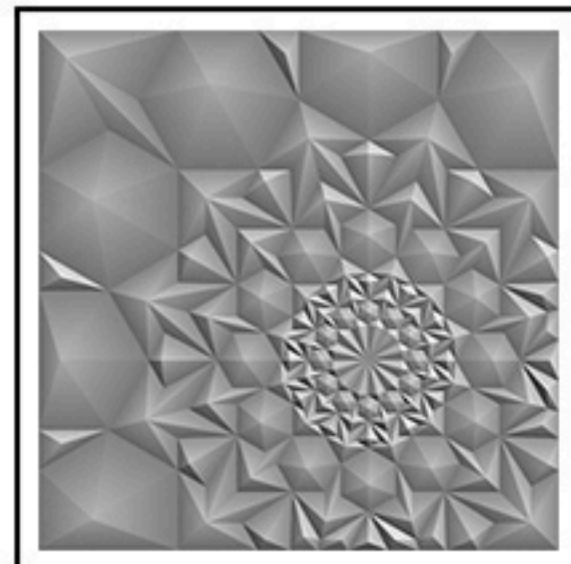
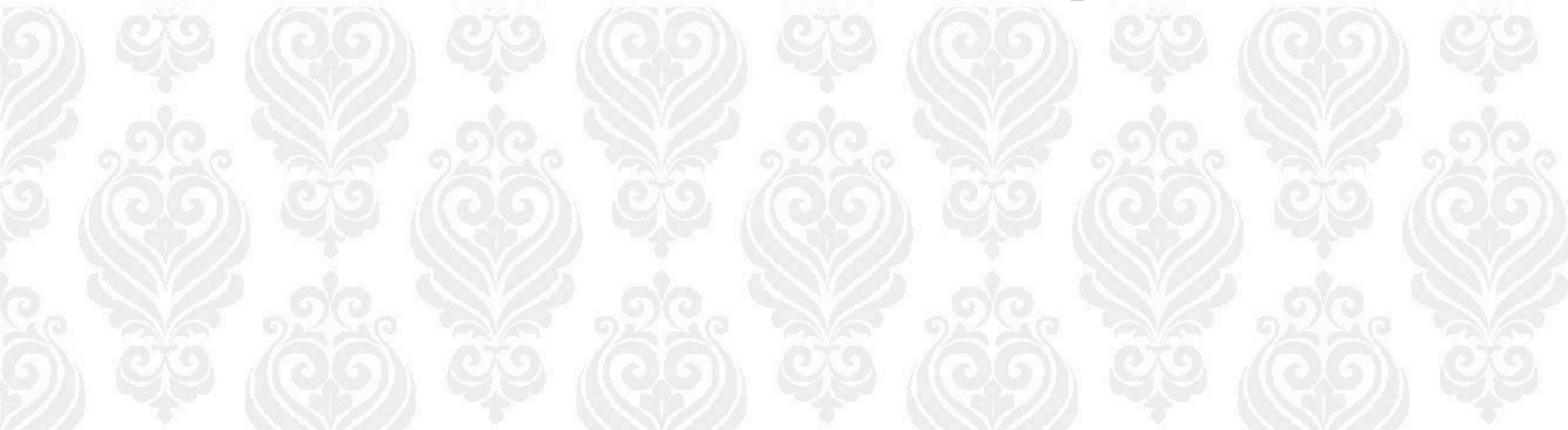
WALL DECORE PREVIEW OF

DECENT FERRARI



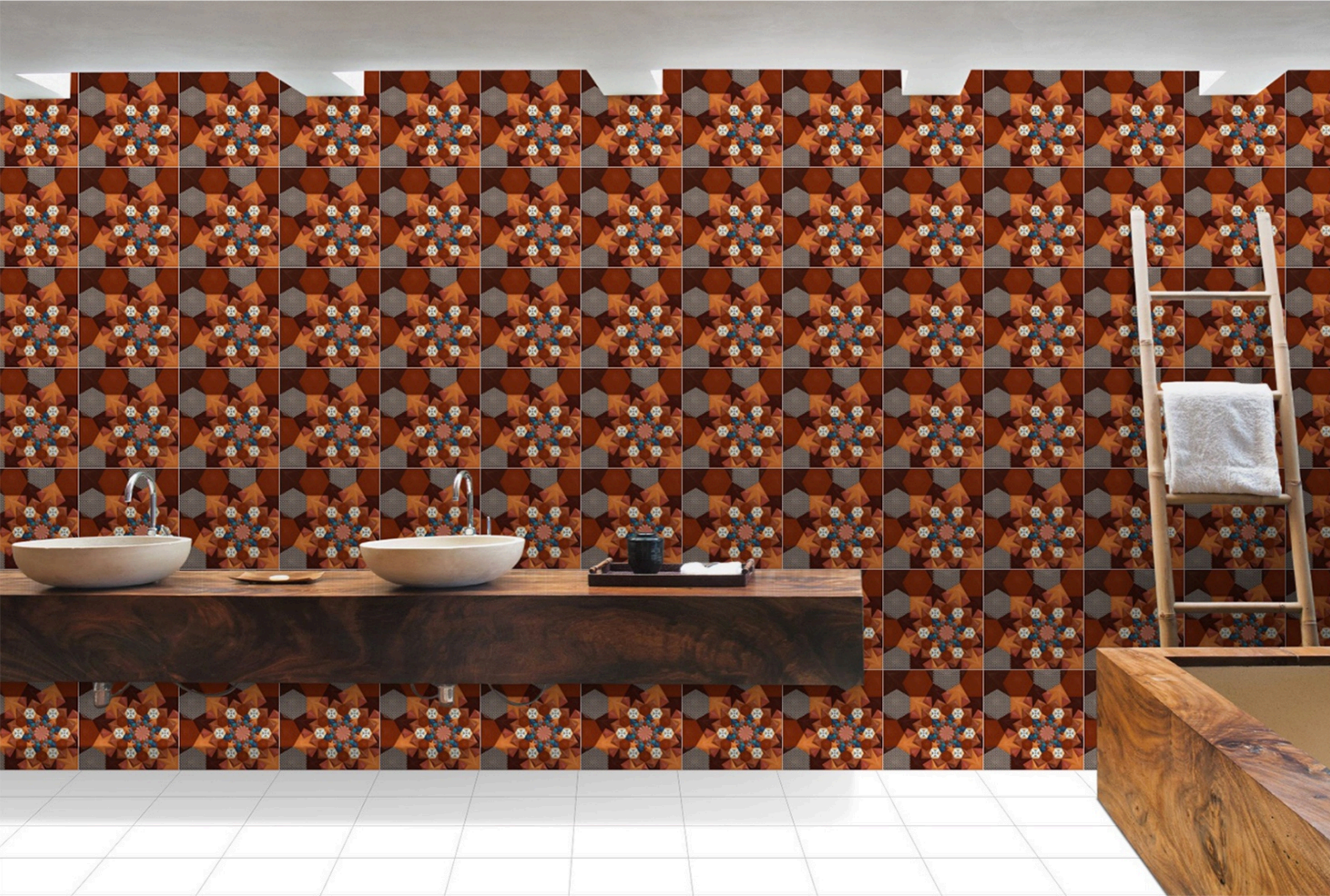


DECENT ICONIC-HL-1



WALL DECORE PREVIEW OF

DECENT ICONIC



Application Area



LIVING ROOM



BEDROOM INTERIOR



AUDITORIUM



PREMIUM CAFES



OFFICE INTERIOR



RECEPTION DESK



LUXURIOUS SHOW ROOM



BATH AREA

Surface And Benefits



Resistant to mould and fungi



Resistant to UV rays, no alteration to colours



Resistant to scratches and abrasions



Resistant to chemicals, acids, alkalis and solvents



Resistant to humidity



Resistant to staining



Resistant to heat and high temperatures



Suitable for indoor and outdoor applications



Resistant to deflection



Resistant to thermal shock

TECHNICAL SPECIFICATION

DIMENSION & SURFACE QUALITY		
1) Dimension & Surface Quality	+0.5%	+0.4% ²⁾
2) Deviation in Thickness	+0.6%	+0.3 mm
3) Straightness of sides	+0.3%	+0.2%
4) Rectangularity	+0.5%	+0.3%
5) Surface Flatness	+0.5%	+0.3%
6) Surface Quality	Min.95%	Min.96%
PHYSICAL PROPERTIES		
1) Water Absorption	> 10%	12-15%
2) Bending Strength	> 150 kg./cm ²	150-180 kg./cm ²
3) Scratch hardness (Mohs)	Min 3	Min 3
4) Crazeing	1 Cycles	No Crazeing at 4 Cycles
CHEMICAL PROPERTIES		
1) Staining Resistance	Min Class 2	Resistance to all Acids & Alkalies & Household Chemicals, except Hydrochloric Acid
2) Household Chemical	Min Class B	
THERMAL PROPERTIES		
1) ThermalShock	Resistant to 10 Cycles	CONFORMS
2) Thermal Expansion	Max. 9E-06	CONFORMS

PACKING DETAILS

Size	Thickness	Pcs/Box	Coverage Area	Weight
300x300mm	13mm (approx)	10	09 Sq.mtr	17.12 Kg. (approx)

Contact Details:

 www.eskimoceramica.com

Export Inquiry:

 export@eskimoceramica.com

 +91 8980 714071

Domestic Inquiry:

 eskimoceramica@gmail.com

 +91 9925 132132

 +91 9998 506661

Corporate Address:

G-23, Siromany Business Center, Nr. Eden Ceramic City, Behind Real Plaza,
8-A National Highway, At Lalpar, Dist. Morbi, 363 642 Gujarat (INDIA)

